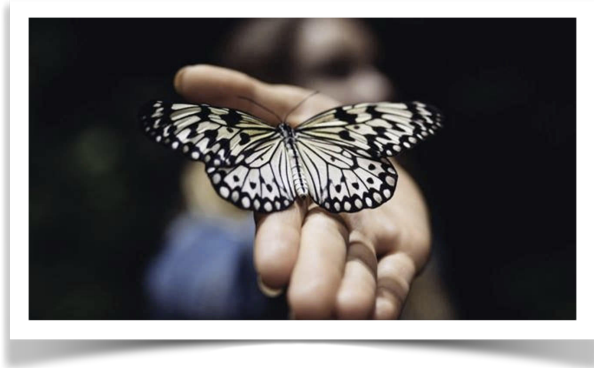


GALACTIC TO GAIA GLOSSARY



This Glossary is from Sharon Riegie Maynard's book, **Heeding the Cries of the Children, The Ancient Ones Give Warning.**

Words that are *italicized* are defined elsewhere in this glossary

Agendas: In the energy-space of *Home*, all possibilities exist. When a collective of consciousnesses/*souls* embraces a particular possibility (e.g. Curiosity or Domination or Joy or Pain) that possibility is the reason for their experience as they extend their existence and are 'birthed' beyond Home. The agenda is the motivation for the experience of the collective 'family'.

Beings: Each individual or soul, in the physical body on Earth and in the *unseen worlds*, is a Being. This term is used most often for those in the unseen worlds, also called *spirit worlds*.

Bodysuit: The bodysuit (female or male) is an Earth vehicle which allows the vibrational body of the *soul* to have a physical presence on the physical Earth. It is based on a blueprint designed by our intelligent *soul collective* to enable experiences on Earth.

Broken brains: Brains of newborns are unorganized. The brain pathways are created according to the environment around the child: actions, ideas, subtle sensations, and words. These brain pathways support the information received from the environment. The child's automatic nervous system responses and chemical activations are in relationship to those wired pathways. When an individual experiences trauma or neglect, real or imagined, the pathways between the hemispheres disconnect. Some call those traumatized individuals "children or adults with broken brains."

Circuitry/Wiring: The *bodysuit* blueprint exists in the unseen dimensions and includes vibrational codes which create specific energetic circuitry, also known as energetic wiring. These energy circuits are the template for the physical systems of the body.

Collaborative Mind Set: The mental disposition created from beliefs that diverse views are valuable and that working jointly with others brings greater solutions and possibilities.

Collective Psyche: In the worlds before Earth in the *unseen*, *souls* exist within the system of group mind and consensus. The concept that we are all one is literally true in those worlds. We

are *soul collectives*. Thoughts and actions within the collective, and later by individual souls, have left patterns of energy. Those patterns are held in individual's energy space during their earth experience as well as within that greater energy field of the Collective.

Concepts: Ideas and beliefs we create or encounter become thought patterns which manifest as personal philosophy and social dogma. These are all stored within the energy of our life field.

Deva: Spiritual intelligences within the various nature kingdoms on Earth.

DNA programming: The original blueprints for female and male bodysuits were designed with 12 strands of DNA. This DNA was programmed for specific gender missions as well as evolution toward soul restoration.

Domination Agendas: every agenda, concept, and plan has a unique vibrational signature. Domination is a vibrational agenda that is parasitic by nature and includes using the host's energy; it causes damage, disease and eventual death of the host's bodysuit. See *outsider/parasite*.

Etheric: One dimensional region within the 64 dimensions that comprise the life flow for all of humanity. Commonly it is the frequency of 7th and 8th dimensions of our life force field. See *unseen*.

Etheric patterns: The patterns from ideas, words, concepts are held within any of the dimensions of our life field. These patterns can be held by individuals, genetic lineage, groups, or by the masses. If held within the 7th or 8th dimensions, we would say, Etheric patterns although their vibrations ripple to impact the entire field. The same is true for patterns in all of the other dimensions.

Good/Benefit: a reflection and manifestation of the *Home* energy of wholeness in which all possibilities for Good (e.g. compassion, joy, love) exist.

Higher Self: see *Soul*.

Home: The original Source energy-space from which the flow of all Life and identity begins.

Humanity: Consciousnesses/Souls from Divine Star Families who have volunteered for Earth Mission, individualized and living within a physical body suit.

Imprints: see *Patterns*.

Law: Unchanging principles that govern life on earth. There are physical laws, such as the Law of Gravity, as well as spiritual laws.

Law of Manifestation: The principle that causes vibrations within the flow of life to slow down and take form according to a pattern with the field. For example, emotional vibrations that are persistent in the field of an individual slow down to become physical vibrations that emerge as physical experiences in the body or in the individual's outer life.

Life plan: The goals chosen by an individual at the Soul level before a birth into a human *bodysuit*.

Multi-dimensions: The flow of life-energy from the original *Home* has decreased in vibrational speed. The 7 world regions between the wholeness of Home and the much slower vibrations of the Earth world are designated by the speed of the frequencies. See *Unseen*.

Negative forces: Vibrational energies that emerge from *agendas* that intend to exploit and create damage, destruction, and diminishment. See *domination agenda* and *outsider/parasite*.

Karma: the total effect of the actions and conduct of an individual *soul* on Earth during successive phases of their existence. Some thoughts and action create patterns that bring negative results and some create beneficial results. See *Law of Manifestation*.

Non-health: Imbalanced energies that arise from negative patterns and manifest in forms that are contrary to health and wholeness.

Oneness: The state of being in *Home* energy where there are no boundaries and all consciousness is inherently interconnected.

Outsider/Parasite: In their naivety, some of the *soul collectives* exploring agendas of good/benefit were unaware that there were other soul collectives/families who chose to explore agendas of domination and negativity. Since the agendas of negative forces are parasitic and contrary to the agendas chosen by the original soul collectives who settled Earth, I have given such collectives the name, Outsiders.

Patterns: energy that has been shaped, at any level, is set as a pattern in the life force field and becomes a seed/imprint. This energy does not self-correct but remains as a pattern until a soul in a physical body releases it through a new choice or a reframe. Patterns can be created and held in the energy field of the individual as well as in the *Soul Collective*.

Personal birth plan: See Life Plan

Reality Shift: *TAG* Process of claiming, anchoring and activating a conscious choice

Reality Statement: A statement of positive choice (similar to an affirmation) used in the *TAG* Reality Shift Process.

Resonance: a phenomenon in which a vibrating system or pattern causes another system to oscillate at the same frequency.

Sacred Space: consciously created space that has been cleared and secured with vibrational qualities of wholeness. In the *TAG* Process, qualified spiritual beings of proven integrity are also invited to be present in the space.

Seeing/Hearing: The ability to use senses beyond those of the physical human body to be aware and in communication with beings in the unseen worlds of spirit.

Soul: The consciousness, alive aspect of life force inhabiting the physical bodysuit.

Soul Collective / Collective Psyche: In the worlds before Earth, the Galactic worlds, Souls exist within a system of group mind and consensus. The *concept* that we are all one is literally true in those worlds. We are Soul Collectives. On the earth, individual actions were critical. Thoughts and actions within the group and by individuals have left caused patterns of energy. Those patterns are held in individual space in earth experience as well as within that greater energy field of the Collective.

In the energy-space of Home and in the 7 Unseen World regions, souls exist as collectives, not individuals. Those soul collectives exist as part of a group mind/consensus system and are focused on the experience of a particular agenda. While souls in bodysuits on Earth have specific missions that are based on the ability of the individual to take action, we are still and always will be a part of our greater Soul Collective, whether we are currently aware of it or not.

Spirit: Spirit denotes a vibrational frequency and is not a term to indicate “righteousness”

Spirit Worlds: see Unseen.

Spiritual region storage: The *patterns* that are stored in the regions above the 3 dimensions that can be discerned by the 5 physical senses. Patterns that exist and are stored in the regions that have a higher vibrational frequency than the three dimensions that can be discerned by the five human physical senses. See *Unseen* and *Etheric* patterns

TAG protocol: Processes, methods, and tools used in the TAG System of Transformation

Tribal mind: Beliefs and dogma regarding ‘truths’ of human life including female/male roles, safety, god, etc. These thought patterns are passed down from one generation to the next as the way the world should be, and always has been, according to that tribe / community / profession, etc.

Universal Laws: see *Laws*.

Unseen: As soul collectives extended beyond *Home* they encountered/created 8 world/regions that contain 8 frequencies each for a total of 64 energy frequency regions. Each energy region is designated by the speed of the energy wave frequencies.

The slowest frequencies constitute the world of Earth. Earth is the 8th world/region with 8 frequency dimensions. Dimensions 1, 2, and 3 are the slowest frequency regions and are the ones that can be discerned by the 5 human physical senses.

All 61 other energy regions that cannot be known by the 5 human physical senses are considered the Unseen Realms or Unseen Dimensions – sometimes known as the Spiritual Realms. This includes the 7 other world/regions known as the Galactic Worlds.

Wholeness: State of *Oneness* reflective of *Home*.